

BETSIE VALLEY TRAILBLAZER

SPRING / SUMMER 2018 NEWSLETTER



Friends of The Betsie Valley Trail 25th Anniversary

Twenty-five years ago, Friends of the Betsie Valley Trail (FBVT) was formed. Since 1993, countless businesses and community members have played a role in making The Betsie Valley Trail one of the most beautiful and well cared for trails. Without you and so many others the trail would not be what it is today. So this year, as you spend time with your friends and family on The Betsie Valley Trail we look to the future and all of the memories yet to come in such a unique and breathtaking piece of nature.

THANK YOU FOR 25 YEARS OF SUPPORT!

Business Spot Light

If you are planning on traveling the trail for the day, or even canoeing down the Betsie River, Conundrum Café is a great spot to meet up, or celebrate a beautiful day on the trail. Conundrum Café is located in the Village of Elberta. It is across the street from the Elberta Trailhead, at M22, and the Open Park Space where the Elberta Farmers Market is held every Thursday. The Café building was once a General Mercantile Building and dates back to 1880.

Step inside Conundrum Café and pick from over 100 mix and match of craft beer to go, wine and other spirits. Have a

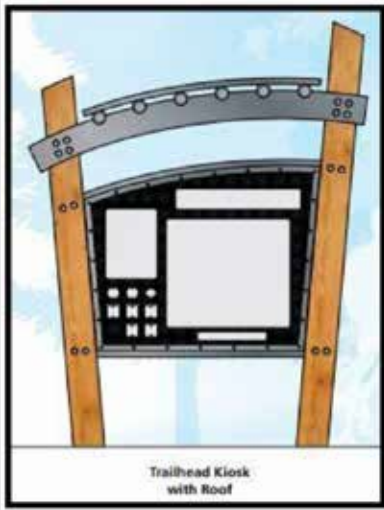
seat at the counter and enjoy freshly made sandwiches and snacks, and if you are in need of something cool, maybe even some ice cream or a smoothie. The Café also offers bike repairs, and also bike and kayak rentals. Conundrum Café is the perfect spot to either start your journey on the trail or end it. There is a relaxed hum and ease about the place that encourages friends and family to pull up a chair and share stories of the trail and create long lasting memories.



Rusty Spike Award

The Friends would like to thank Tina Clark who is retiring as the group's database manager. Tina was recruited to the job by her brother, Bill Olsen, in 2001 and has served since then. Tina is shown in the photo receiving the "Rusty Spike Award" from President David Oellerich.





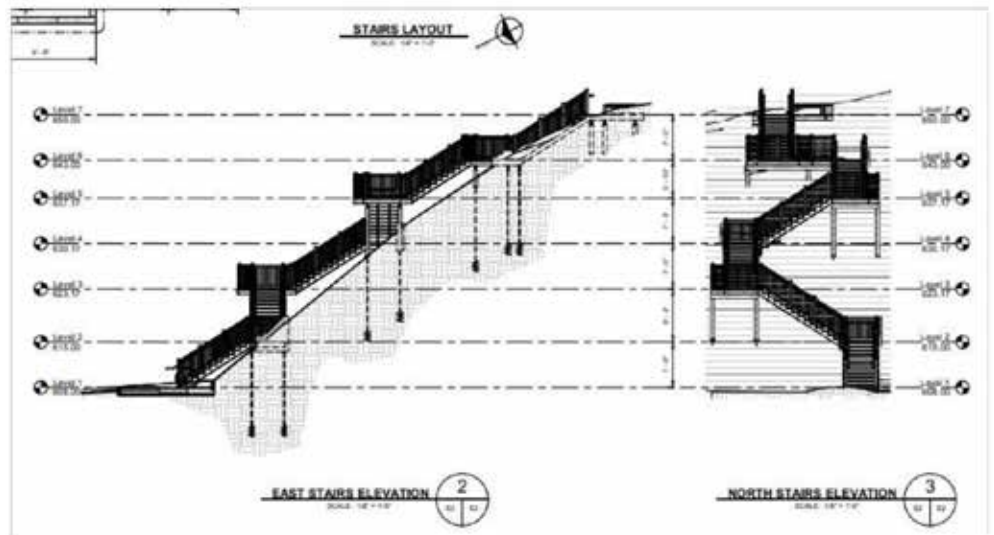
Trail Signage and other Improvements Project

Look for several improvements to be made to the Trail this summer! As part of a multi-year project to upgrade the Trail's signage, and provide historical and ecological points of interest along the Trail and improve safety and universal access to the Trail, we are excited about this project. The FBVT is currently planning the specific elements of this project that will include mile markers, distance to points of interest information, Trailhead general information kiosks, safety improvements at major road crossings and improved universal access at some Trailheads. To date the FBVT has secured \$36,000 to pay for these improvements. The FBVT has committed \$5,500 to the project. The FBVT has also received three grants totaling \$30,500: \$10,000 from the Pemberton Foundation, \$15,000 for Northwest Michigan Health and \$5,500 from DALMAC. The actual installation of these improvements for the funds secured to date will begin this Summer with completion by the Fall.

Stairway Construction

Watch for construction of the Charlie Kehr Memorial Trail Connector in the Railroad Point Natural Area beginning in June. This stairway will connect the Mary Margaret Johnson Trail at Railroad Point with the Betsie Valley Trail. For Trail users, climbing the stairway leads to a stunning overlook of Crystal Lake, and is a perfect spot to rest, picnic, or watch the sunset. The stairway is named in

memory of Charlie Kehr, a Betsie Valley Trail Founder and Board Member, and former Benzie County Parks Commissioner who was instrumental in many outdoor initiatives in the County. The stairway is being built by Swidorski Bros. under the guidance of the Grand Traverse Regional Land Conservancy. Completion is expected in August.



Stormcloud 5th Beerthday Bash

We are excited to partner with Stormcloud Brewing Company for their 5th Beerthday Bash, Saturday, June 16th at 3pm. Join us at the Elberta Trailhead where Stormcloud will be donating \$5 to the Trail for every participant as we run/walk/ride over to Frankfort. (Rumor is there is even going to be a costume contest with prizes.) There will be Stormcloud Brews on Tap, Brats and Hotdogs, and even live music from Jake Frysinger. Also, that day 50% of the Stormcloud Pub sales will be donated to Friends of the Betsie Valley Trail.

Let's join together and raise a pint to this great community benefit. Thank you Stormcloud for everything you do for The Betsie Valley Trail!



Volunteer Appreciation Event

The Friends of the Betsie Valley Trail will be hosting a volunteer appreciation party for anyone who has ever volunteered for the Trail, or would like to hear about future volunteer opportunities. The event will take place at The Cabbage Shed in Elberta, on Tuesday, June 19th 4pm – 6pm. Beverages and light appetizers will be provided free of charge. If you cannot make it to this event please visit our website for more information about how to become part of our upcoming events.

Current Volunteer Opportunities Exist For:

- Trail Brochure Distribution
- Event Planning (Particularly for the Paddling Film Festival coming in September!)
- Publicity
- Database Management
- Fundraising
- Trail Maintenance



Photo By Kari MacDonald

Paddling Film Festival World Tour Coming Soon!

Grab that popcorn and get ready to go on an adventure! On Saturday, September 29th we are proud to be a part of the Paddling Film Festival World Tour at The Garden Theater in Frankfort. This will be our first fundraiser of this kind. Join us as we screen some of the world's best canoeing, kayaking, whitewater, SUP, and kayak fishing films. All funds raised will go back to The Friends of The Betsie Valley Trail. Be sure to like our Facebook Page or check into our website as we get closer to this event.



Photo By Sue Hammon

Trail Visitors of All Sizes

Visitors of all shapes and sizes love to take in the sights on The Betsie Valley Trail. Just a reminder, that when you are traveling along the trail, remember to leash your dogs and pick up after them. Another fun activity to do while on the trail is to bring an extra bag with you. If you see any stray trash on the trail please pick it up. We want everyone to be able to have a great day of savoring a Northern Michigan summer. See you Soon!



Upcoming Summer Events

Be sure to stop by and see us at these upcoming summer events. We will have information on all our events and trail news.

Saturday July 7th at the Beulah 50th Annual Art Fair 10am - 5pm

Wednesday July 25th at the CSA Art Fair 10am - 4pm

Friday August 17th at the Frankfort Art Fair 4pm - 8pm

Saturday August 18th at the Frankfort Art Fair 10am - 5pm



**P.O. BOX 474
BEULAH, MI
49617-0474**

**Change Service
Requested**

VISIT OUR UPDATED WEBSITE:

betsievalleytrail.org
and
Like Us on Facebook



**WE WELCOME ALL FRIENDS AND
TRAIL PHOTOS!**

To receive our monthly e-newsletter,
please send your e-mail address to:
FBVTMI@gmail.com

Please don't forget to renew your membership if you haven't already done so. Envelope enclosed. Make your gift to the Trail last FOREVER by contributing to the William R. Olsen Endowment for The Betsie Valley Trail. You may also donate through our website at betsievalleytrail.org.

Friends of the Betsie Valley Trail
PO Box 474 • Beulah, MI 49617

We are a 501(c)3 Corporation.
Contributions are tax deductible.

